

1.

2.

3.

4.

5.

6.

3.

4.

24

5 , 5

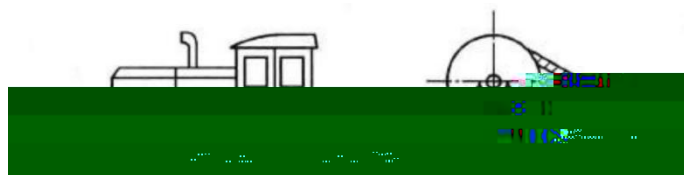
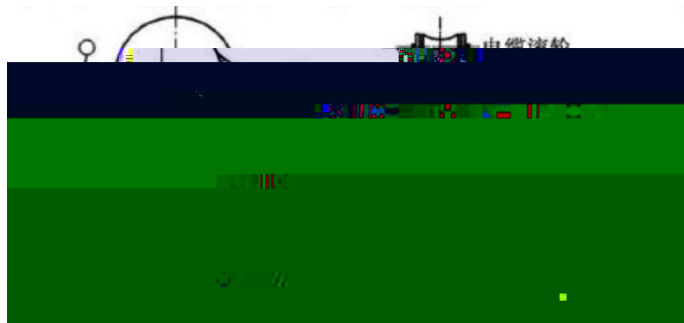
5.



6.

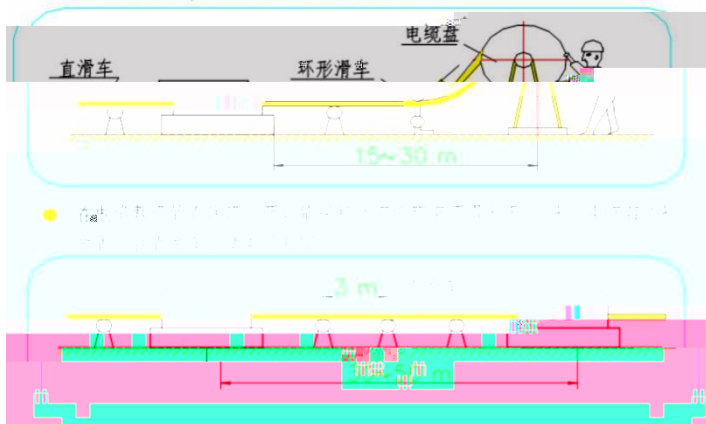
7.

1.

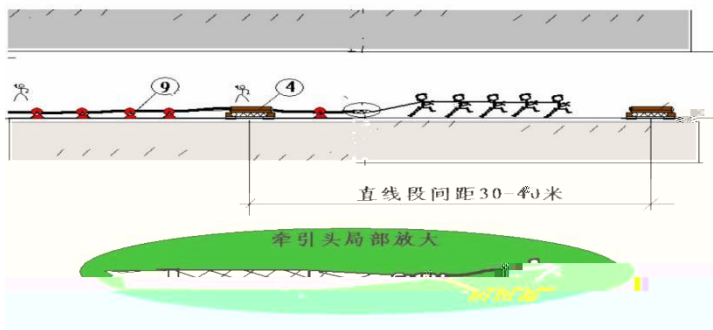


2.

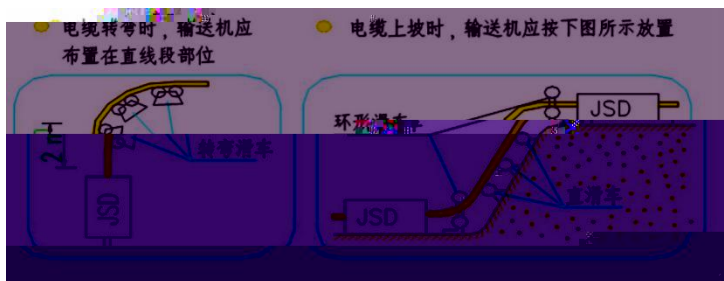
- 输送机启动时，电缆盘应有工协助转动或制动



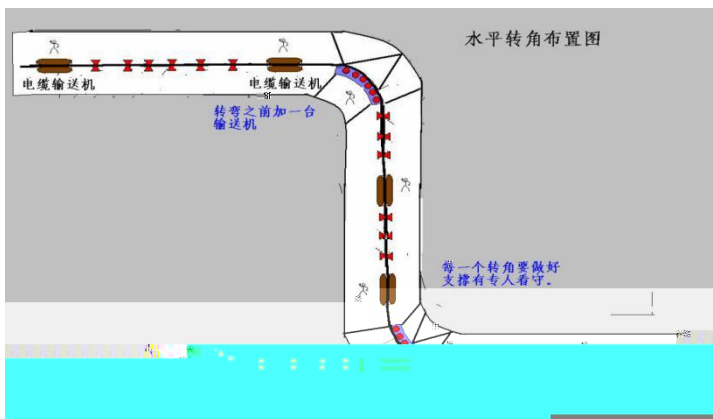
3.



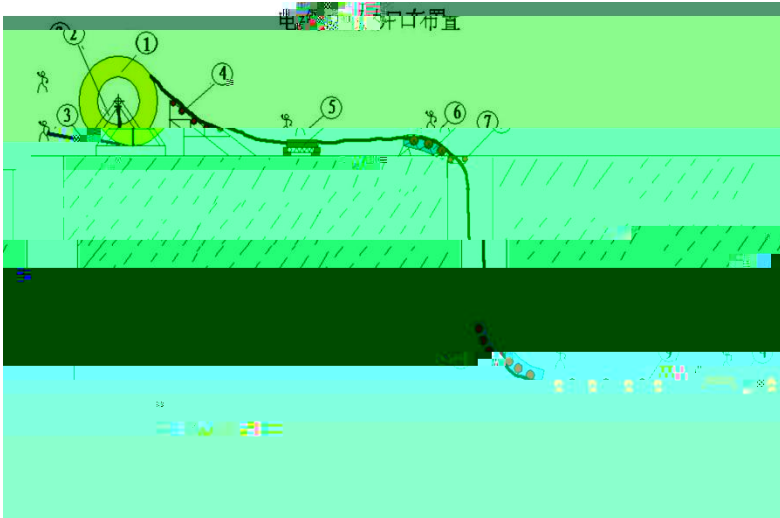
4.



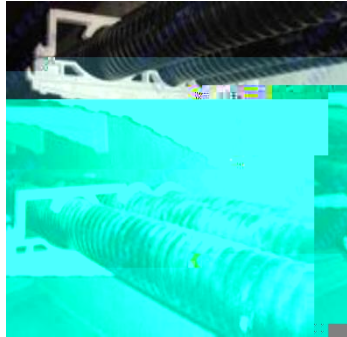
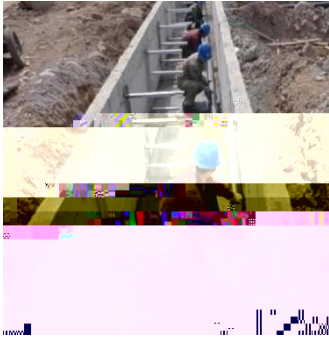
5.



6.



7.



8. 6 10m 3~ 5m

9. S

1.

2.

3.

10m/min

4.

$$= 3\text{kN/m} \times 30\text{N/mm}^2 = \quad \times 50\text{N/mm}^2$$

5.

6.

7.

8.

9.

2/3

10.

11.

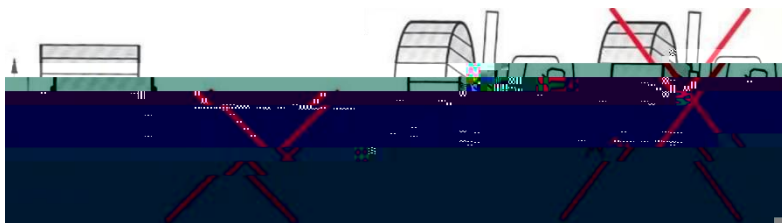
d :

66kV- 150kV	35d	30d	15d	20d
220kV	35d	30d	15d	20d

12.

13.

1.



2.

3.

4.

5.

6.

7.

8.

9.